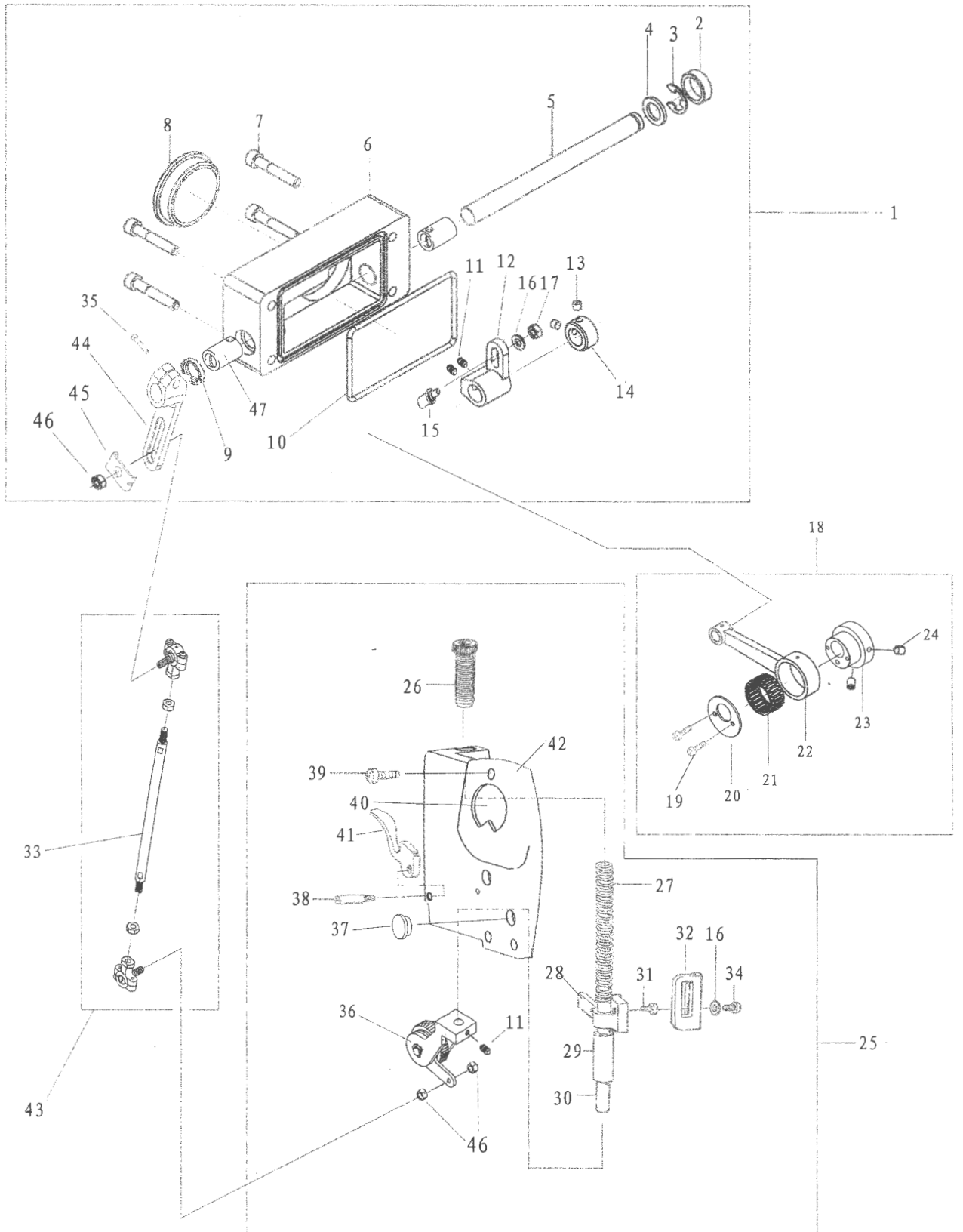


JK-8560W-PL

14. 后拖轮装置/Puller device mechanism



14. 后拖轮装置/Puller device mechanism

序号 REF. NO.	编号 CODE	名称	Name of parts	用量 Q' TY
1		后盖箱组件	Bracket Assembly	1
2	30522019	油封	Plug	1
3	H05011	GB/T896-1986卡簧	E-Ring	1
4	30128015	摆动连杆轴垫圈	Washer	1
5	30502045	拖轮轴	Shaft	1
6	301175	后盖	Bracket	1
7	207S13004	螺钉 (M6X35)	Screw M6X35	4
8	30522069	油封	Plug	1
9	20122021	油封	Plug	1
10	30522070	后盖密封圈	O Ring	1
11	S10029	螺钉M6x0.75X5	Screw M6X0.75X5	3
12	30504035	曲柄	Crank	1
13	S09008	螺钉M5X5	Screw M5X5	2
14	30508001	挡圈	Collar	1
15	30126006	连杆销	Pin Screw	1
16	30128009	连杆销垫圈	Washer	2
17	N01004	螺母M5X5	Nut	1
18		拖轮偏心轮组件	Puller Eccentric Assembly	1
19	101S11006	螺钉SM1/8"X44 L=4.5	Screw SM1/8"X44 L=4.5	2
20	40612050	固定板	Thrust collar	1
21	B07036	滚针	Needle Bearing	1
22	12605003	主轴连杆	Connection	1
23	12610001	主轴偏心轮	Eccentric	1
24	116S14004	螺钉SM1/4"X40 L=6	Screw SM1/4"X40 L=6	2
25		面板组件	Face Plate Arm Assembly	1
26	40603019	调压螺钉1/2X28	Presser Adjust Screw1/2X28	1
27	12627004	弹簧	Spring	1
28	40609009	压脚轴连接块	Presser Bar Clamp	1
29	40603021	拉杆轴下套	Presser Bar Bush, D	1
30	40602016	拖轮轴	Puller Presser Bar	1
31	AS05038	压脚连接块螺钉M5X8	Screw M5X8	1
32	12612007	连接片	Link	1
33	12602003	拉杆轴	Presser Bar	1
34	409S11013	连接片螺钉SM5/64X28	screw SM5/64X28	1
35	S05019	螺钉M6X16	Screw M6X16	1
36	4061400800	拖轮组件	Puller	1
37	10122003	面板调节螺孔塞	Rubber Plug	2
38	40602013	固定销子	Pin	1
39	101S11001	螺钉SM3/16"X28 L=9	Screw SM3/16"X28 L=9	3
40	10137002	商标牌	Plare With Trademark	1
41	40601031	拖轮扳手	Presser Foot Lifter	1
42	12601004	面板	Face Plate Arm	1
43	4060402400	拉杆组件	Pitman Rod Assy	1
44	12604007	调节曲柄	Clutch Lifter	1
45	40612048	刻度指示板	Degreeer Plate	1
46	402S16003	螺母	Nut	3
47	20103020	摆动连杆轴套	Bush	2